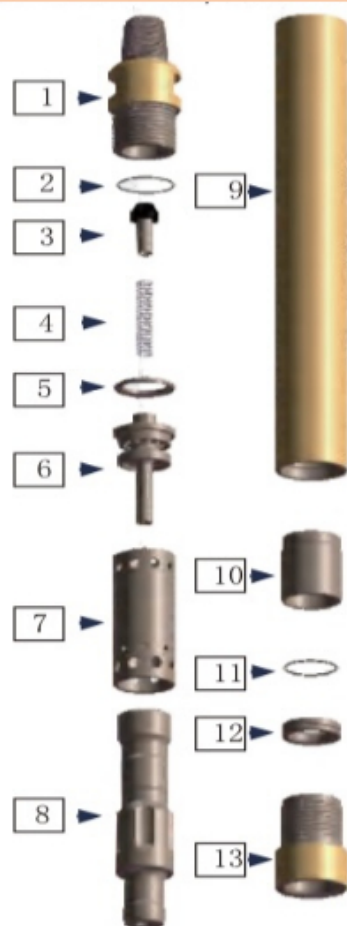


DTH HAMMER *** WITHOUT FOOT-VALVE ***

It is one of the most cost-effective DTH hammer in China. It has the advantages with fast penetration, low air consumption, good stability and long service life. The advantages as follow,

1. The structure is more simple, easy to maintain, less trouble;
2. It adopts a more reasonable structure design, the impact energy can be transmitted most effectively, then hammer with large impact power, low air consumption, high impact frequency and fast drilling speed;
3. The parts are all made of high-quality special steel, and the surface is hardened and the smoothness is improved, so can ensure the good wear resistance and long service life;
4. The piston is produced by imported materials and suitable heat treatment technology, ensure the more wear-resistant, and the pressure drops slowly.



NO.	PART LIST
1	BACK ADAPTER
2	O RING FOR ADAPTER
3	CHECK VALVE
4	SPRING
5	SHOCK RING
6	AIR DISTRIBUTING SEAT
7	INNER CYLINDER
8	BUSH DRIVE SUB
9	PISTON
10	OUTER CYLINDER
11	O RING FOR CHUCK RING
12	BIT RETAINER RING
13	CHUCK SLEEVE

ADAPTER WITH CARBIDES IS AVAILABLE

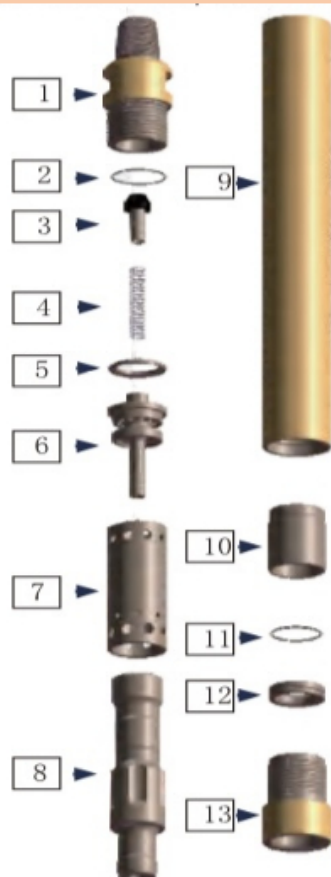
TECHNICAL PARAMETERS

DESCRIPTION	3.5"	4"	5"	6"	7"	8"	10"
LENGTH (WITHOUT BIT)	863 mm	967 mm	1070 mm	1164 mm	1318 mm	1366 mm	1522 mm
W.T. (WITHOUT BIT)	22.0KG	38.4KG	68.4KG	101.5KG	153KG	184.3KG	295.1KG
O.D. OF HAMMER	80mm	99mm	126mm	146mm	170mm	185mm	220mm
BIT SHANK	DHD3.5	DHD340	DHD350	DHD360	7H	DHD380	Numa10
		Mission40	Mission50	Mission60		Mission80	SD10
		COP44	QL50	QL60		QL80	TD90
REC. HOLE RANGE	Φ90mm-Φ105mm	Φ105mm-Φ130mm	Φ135mm-Φ165mm	Φ155mm-Φ203mm	Φ178mm-Φ216mm	Φ203mm-Φ254mm	Φ254mm-Φ311mm
THREAD CONNECTION	API2 3/8 " Reg	API2 3/8 " Reg	API2 3/8 " Reg	API3 1/2 " Reg	API4 1/2 " Reg	API4 1/2 " Reg	API5 1/2 " Reg
MAX. AIR CONSUMPTION	2.0MPa	2.5MPa	2.8MPa	3.0MPa	3.0MPa	3.0MPa	3.5MPa
IMPACT FREQUENCY	15Bar - 30Hz	18Bar - 36Hz	18Bar - 35Hz	18Bar - 32Hz	18Bar - 30Hz	18Bar - 26Hz	18Bar - 26Hz
REC. ROTATION SPEED	30-60r/min	30-60r/min	25-55r/min	25-55r/min	25-55r/min	25-50r/min	25-50r/min
AIR CONSUMPTION	15Bar - 7m³/min	18Bar - 11m³/min	18Bar - 16m³/min	18Bar - 20m³/min	18Bar - 23m³/min	18Bar - 28m³/min	18Bar - 41m³/min

DTH HAMMER *** WITH FOOT-VALVE ***

It is a new type of high pressure hammer which developed by our company. It has the advantages of fast penetration, long service life and high stability. The advantages are as follows:

- 1.It adopts a high-frequency design,the impact frequency is closed to the hammer without foot valve.
- 2.All of the parts are made of high-quality special steel, and the surface is hardened and the smoothness is improved,so that can ensure good wear resistance and long service life;
- 3.It has the advantages of simple structure, high reliability, easy disassembly, and convenient maintenance;
- 4.The cuttings is flushed well,the air consumption is about 10% higher than the hammer without foot-valve.



NO.	PART LIST
1	BACK ADPTER
2	O RING FOR ADAPTER
3	CHECK VALVE
4	SPRING
5	SHOCK RING
6	AIR DISTRIBUTING SEAT
7	INNER CYLINDER
8	BUSH DRIVE SUB
9	PISTON
10	OUTER CYLINDER
11	O RING FOR CHUCK RING
12	BIT RETAINER RING
13	CHUNK SLEEVE

ADAPTER WITH CARBIDES IS AVAILABLE

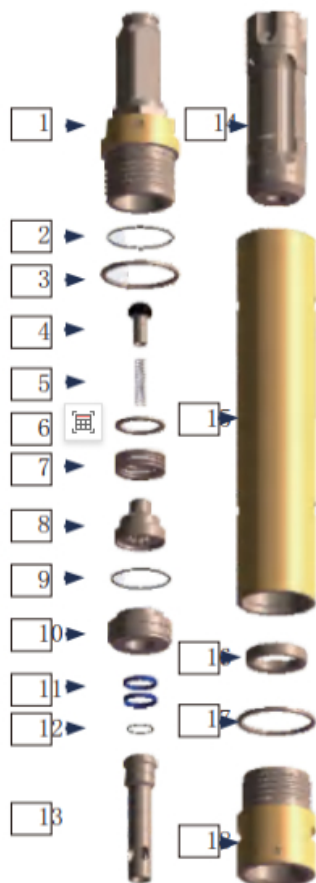
TECHNICAL PARAMETERS

DESCRIPTION	3.5 "	4"	5 "	6"	8"	10 "
LENGTH (WITHOUT BIT)	863 mm	947 mm	1070 mm	1164 mm	1366 mm	1522 mm
W.T. (WITHOUT BIT)	22.0KG	37KG	68.4KG	99.6KG	180.1KG	295.1KG
O.D. OF HAMMER	80mm	99mm	126mm	146mm	185mm	220mm
BIT SHANK	DHD3.5	DHD340	DHD350	DHD360	DHD380	Numa10
		SD4	SD5	SD6	SD8	SD10
		QL40/QLX40	QL50	QL60	QL80	TD90
REC. HOLE RANGE	Φ90mm-Φ105mm	Φ105mm-Φ130mm	Φ135mm-Φ165mm	Φ155mm-Φ203mm	Φ203mm-Φ254mm	Φ254mm-Φ311mm
THREAD CONNECTION	API2 3/8 " Reg	API2 3/8 " Reg	API2 3/8 " Reg	API3 1/2 " Reg	API4 1/2 " Reg	API5 1/2 " Reg
MAX. AIR CONSUMPTION	2.0MPa	2.5MPa	2.8MPa	3.0MPa	3.0MPa	3.5MPa
IMPACT FREQUENCY	15Bar - 29Hz	18Bar - 33Hz	18Bar - 32Hz	18Bar- 30Hz	18Bar - 24Hz	18Bar - 24Hz
REC. ROTATION SPEED	30-60r/min	30-60r/min	25-55r/min	25-55r/min	25-50r/min	25-50r/min
AIR CONSUMPTION	15Bar-7.5m³/min	18Bar-12.1m³/min	18Bar-17.6m³/min	18Bar-22m³/min	18Ba-30.8m³/min	18Bar-45.1m³/min

LARGE DIAMETER DTH HAMMER

The hammer with stable performance and long service life, and its domestic market share is more than 70%. It is mainly suitable for karst caves, gravel layers, block stones and slightly weathered bedrock, and is widely used for pile foundations, water well drilling etc. The outstanding advantages as follows:

- 1.The structure without inner cylinder,simple structure, high reliability and easy maintenance;
- 2.It can drill hard rock and with high drilling penetration;
- 3.Produced by special steel,the rate of failure and crack is low ;
- 4.There is a special fixed position for the gun suit, which is convenient for modification.



NO.	PART LIST
1	BACK ADAPTER
2	O RING FOR ADAPTER
3	STEEL RING
4	CHECK VALVE
5	SPRING
6	ADJUSTING RING
7	BELLEVILLE SPING
8	CHECK VALVE GUIDE
9	O RING FOR AIR DISTRIBUTOR GUIDE
10	AIR DISTRIBUTOR GUIDE
11	PRESSURE BEARING RING
12	O RING FOR AIR DISTRIBUTORTUBE
13	AIR DISTRIBUTORTUBE
14	PISTON
15	OUTER CYLINDER
16	BIT RETAINER RING
17	STEEL RING
18	CHUNK SLEEVE

ADAPTER WITH CARBIDES IS AVAILABE

TECHNICAL PARAMETERS

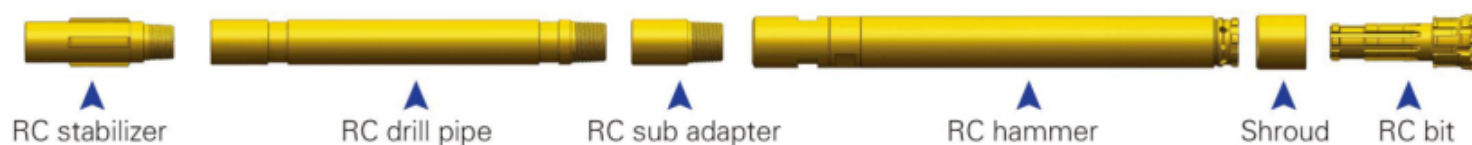
DESCRIPTION	12 "	14"	18 "	24"	28 "
LENGTH (WITHOUT BIT)	1698.5 mm	1954 mm	1954 mm	2543.5 mm	2529.5 mm
W.T. (WITHOUT BIT)	551KG	894KG	1493KG	2598KG	3990KG
O.D. OF HAMMER	275mm	330mm	406mm	525mm	645mm
BIT SHANK	DHD112	PWD14	NUMA180	PWD24	PWD28
	NUMA120/125	NUMA125		NUMA240	NUMA280
	SD12	-		-	-
REC. HOLE RANGE	Φ305mm-Φ400mm	Φ400mm-Φ500mm	Φ500mm-Φ650mm	Φ650mm-Φ800mm	Φ800mm-Φ1000mm
THREAD CONNECTION	API6 5/8 " Reg	API7 5/8 " Reg	HEX	HEX	HEX
MAX. AIR CONSUMPTION	3.5MPa	3.5MPa	3.5MPa	3.5MPa	3.5MPa
IMPACT FREQUENCY	18Bar - 23Hz	18Bar - 22Hz	18Bar - 18Hz	18Bar- 16Hz	18Bar - 12Hz
REC. ROTATION SPEED	15-40r/min	15-40r/min	10-25r/min	5-15r/min	2-8r/min
AIR CONSUMPTION	18Bar - 70m³/min	18Bar - 85m³/min	18Bar - 110m³/min	18Bar - 130m³/min	18Bar - 145m³/min

REVERSE CIRCULATION HAMMER

RC drilling tools offer a cost effective heavy duty sampling system for obtaining continuous, high quality geological samples. Maximizing energy output and minimizing air consumption, environmentally, good cutting flushing, thereby combining excellent drilling performance, usually applied in mineral exploration drilling.

1. The samples can be flushed via inner pipe smoothly under small resistance;
2. The rock cutting will not be flushed into the air, it is an environmentally drilling solution;
3. Low air consumption;
4. Accurate sampling;
5. Inner pipe, shrouds and sample tube are produced by special alloy steel, all of their flushing surface are strengthened.

A complete RC drilling tools product solution, including reverse circulation hammers, RC bits and a full range of dual wall drill pipes, RC stabilizer, Sub adapter.



Common reverse circulation hammer list

NO.	PRODUCT NAME	OUTER DIAMETER (MM)
1	PWD-003 REVERSE CIRCULATION HAMMER	85
2	PWD-004 REVERSE CIRCULATION HAMMER	108
3	PWD-543 REVERSE CIRCULATION HAMMER	116
4	PWD-545 REVERSE CIRCULATION HAMMER	117
5	PWD-040 REVERSE CIRCULATION HAMMER	121
6	PWD-052 REVERSE CIRCULATION HAMMER	126
7	PWD-054 REVERSE CIRCULATION HAMMER	130
8	PWD-060 REVERSE CIRCULATION HAMMER	148
9	PWD-080 REVERSE CIRCULATION HAMMER	185
10	PWD-120 REVERSE CIRCULATION HAMMER	285

